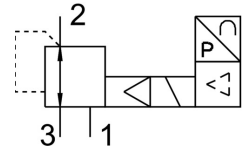


# Proportional pressure control valve VPPM-8L-L-1-G14-0L10H-LK-S1

FESTO

Part number: 8024263



## Data sheet

Feature	Value
Nominal width pressurization	8 mm
Exhaust nominal width	7 mm
Type code	VPPM
Actuation type	Electrical
Sealing principle	Soft
Mounting position	Any
Structural design	Pilot-controlled diaphragm regulator
Short-circuit protection	For all electrical connections
Safety instructions	VPPM safety position: if the supply cable breaks, the outlet pressure is maintained in uncontrolled form.
Symbol	00995303
Reverse polarity protection	for all electrical connections
Reset method	Mechanical spring
Type of control	Pilot-controlled
Valve function	3-way proportional pressure control valve
Display type	LED
Pressure regulation range	0.1 bar ... 10 bar
Inlet pressure 1	0 bar ... 11 bar
Max. pressure hysteresis	0.05 bar
Standard nominal flow rate	2750 l/min
DC operating voltage range	18 V ... 30 V
Max. current consumption	300 mA
Duty cycle	100%
Max. electrical power consumption	7 W
Protocol	I-Port IO-Link®
Residual ripple	10 %
Operating medium	Compressed air as per ISO 8573-1:2010 [7:4:4] Inert gas
Information on operating and pilot media	Operation with oil lubrication not possible
Certification	RCM compliance mark c UL us - Listed (OL)
KC characters	KC EMC
CE marking (see declaration of conformity)	As per EU EMC directive
Corrosion resistance class (CRC)	2 - Moderate corrosion stress
Temperature of medium	10 °C ... 50 °C
Degree of protection	IP65

Feature	Value
Ambient temperature	0 °C ... 60 °C
Product weight	560 g
Linearity error FS	1 %
Temperature coefficient	0.04 %/K
Repetition accuracy FS	0.5 %
IO-Link®, protocol version	Device V 1.1
IO-Link®, communication mode	COM1 (4.8 kBd), COM2 (38.4 kBd), COM3 (230.4 kBd)
IO-Link®, port class	A
IO-Link®, process data width OUT	2 Byte
IO-Link®, process data width IN	2 Byte
IO-Link®, minimum cycle time	0.5 ms
Type of mounting	Optionally: With through-hole With accessories
Pneumatic connection 1	G1/4
Pneumatic connection 2	G1/4
Pneumatic connection 3	G1/4
Note on materials	RoHS-compliant
Housing material	Wrought aluminum alloy Anodized